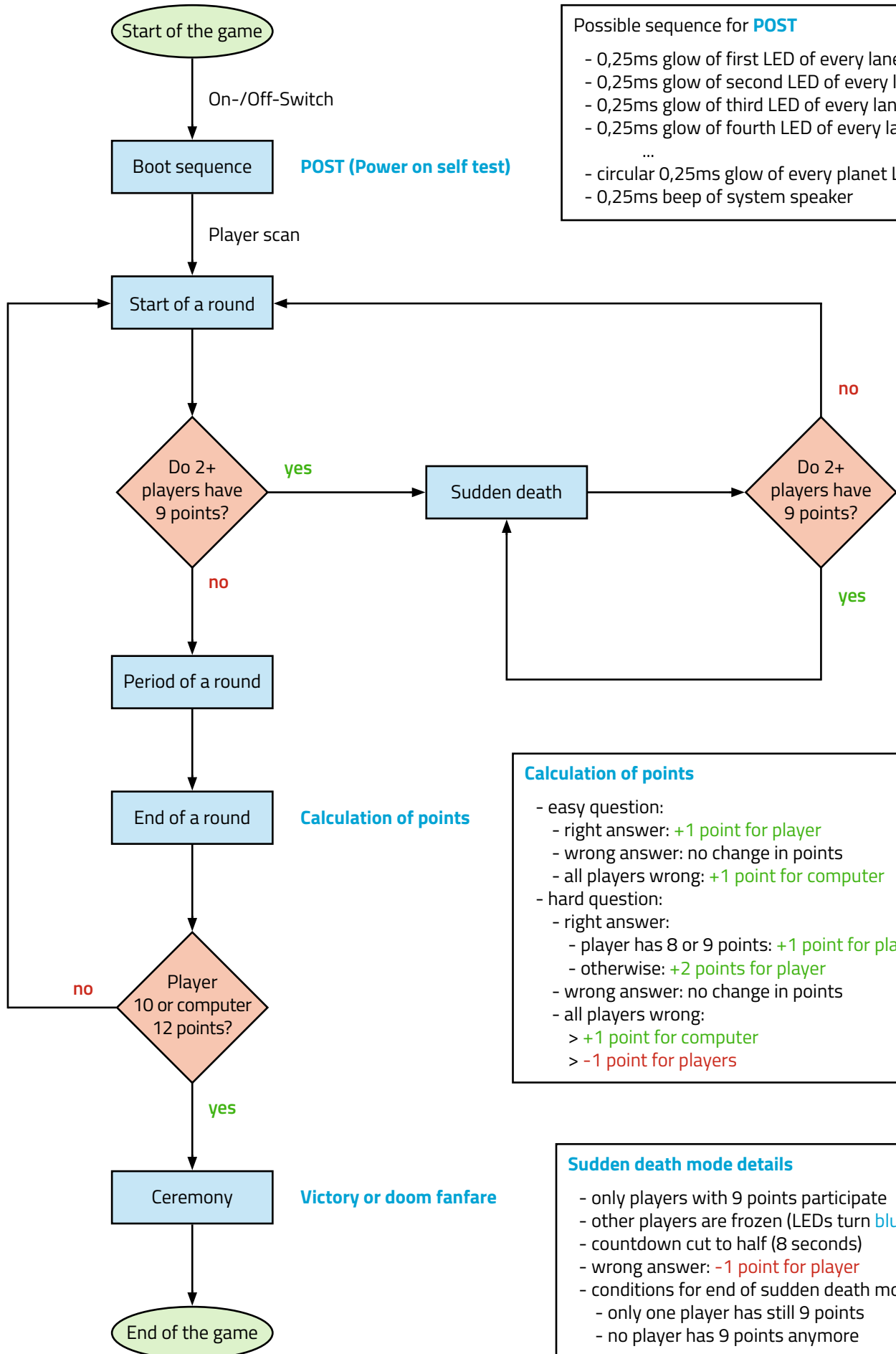


Flow chart for Space Race



Possible sequence for **POST**

- 0,25ms glow of first LED of every lane
- 0,25ms glow of second LED of every lane
- 0,25ms glow of third LED of every lane
- 0,25ms glow of fourth LED of every lane
- ...
- circular 0,25ms glow of every planet LED
- 0,25ms beep of system speaker

Calculation of points

- easy question:
 - right answer: +1 point for player
 - wrong answer: no change in points
 - all players wrong: +1 point for computer
- hard question:
 - right answer:
 - player has 8 or 9 points: +1 point for player
 - otherwise: +2 points for player
 - wrong answer: no change in points
 - all players wrong:
 - > +1 point for computer
 - > -1 point for players

Sudden death mode details

- only players with 9 points participate
- other players are frozen (LEDs turn blue)
- countdown cut to half (8 seconds)
- wrong answer: -1 point for player
- conditions for end of sudden death mode:
 - only one player has still 9 points
 - no player has 9 points anymore